



# GAT MONTHLY MEMBERSHIP PROGRESS REPORT

Results as of: 3/31/2023

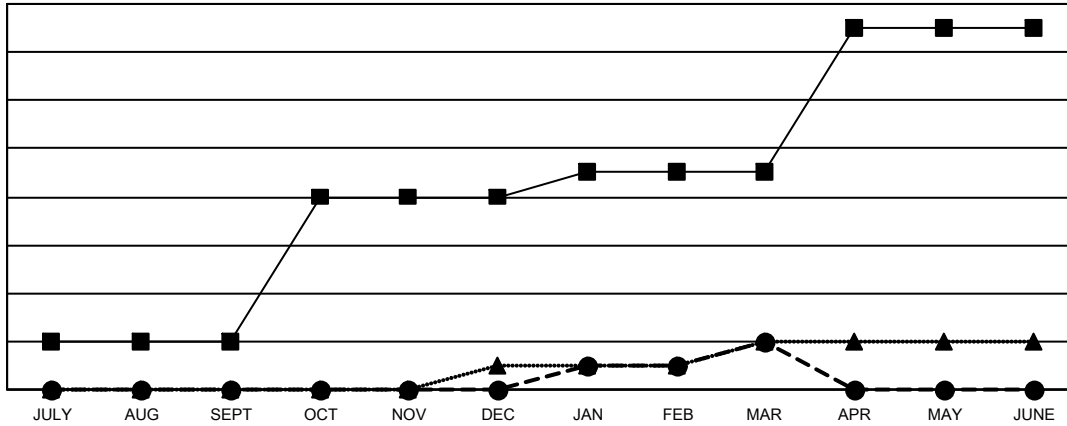
Multiple District 19

LOCATION: WASHINGTON

Clubs			
RESULTS FOR 2022-2023			
QUARTER	NEW CLUB GOAL	NEW CLUBS	DROPPED CLUBS
JULY/AUG/SEPT	2	0	4
OCT/NOV/DEC	6	0	4
JAN/FEB/MAR	1	2	3
APR/MAY/JUNE	6	0	0

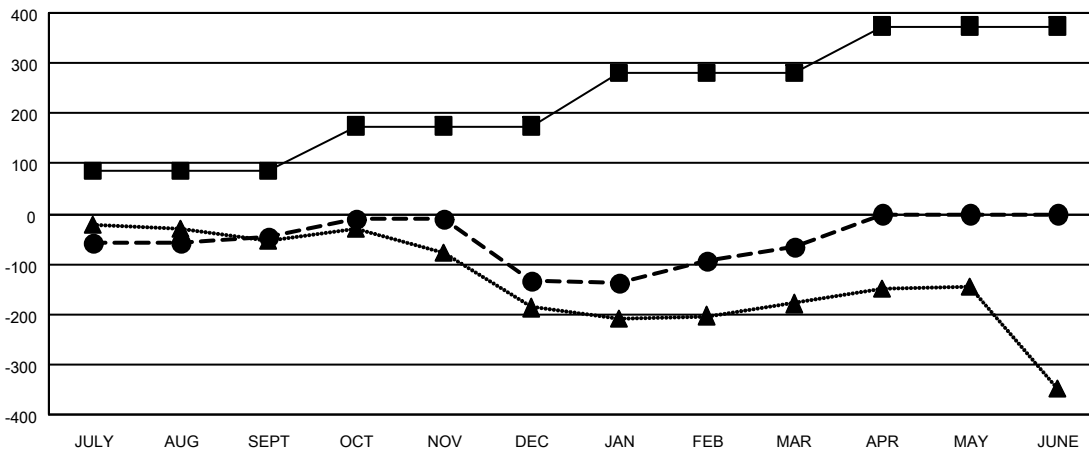
Members			
RESULTS FOR 2022-2023			
QUARTER	MEMBER GROWTH NET GOAL	MEMBER GROWTH ACTUAL	DROPPED MEMBERS ACTUAL (including transfers)
JULY/AUG/SEPT	84	274	287
OCT/NOV/DEC	91	306	357
JAN/FEB/MAR	104	359	260
APR/MAY/JUNE	95	0	0

GOALS AND ACTUAL NEW CLUBS CUMULATIVE



- CURRENT YEAR GOALS FOR NEW CLUBS
- CURRENT YEAR ACTUAL NEW CLUBS
- ▲- LAST YEAR ACTUAL NEW CLUBS

GOALS AND ACTUAL MEMBERS CUMULATIVE



- MEMBER GROWTH NET GOAL
- MEMBER GROWTH ACTUAL
- ▲- LAST YEAR MEMBERSHIP ACTUAL

DROPPED CLUBS: 11	
<b>DROPPED MEMBERS</b>	
DECEASED	115
CLUB CANCELLED	47
OTHER	742
<b>TOTAL</b>	<b>904</b>

235 CLUBS OF 381 ADDED 1 OR MORE NEW MEMBERS

[CLICK HERE FOR CUMULATIVE MEMBERSHIP DATA](#)

GENDER DISTRIBUTION	
MALE	5,629 (59.22%)
FEMALE	3,875 (40.77%)
NON BINARY	0 (0.00%)
PREFER NOT TO ANSWER	1 (0.01%)
<b>TOTAL FAMILY UNIT MEMBERS</b>	<b>2,088</b>
<b>FAMILY MEMBERS PAYING HALF DUES</b>	<b>1,064</b>